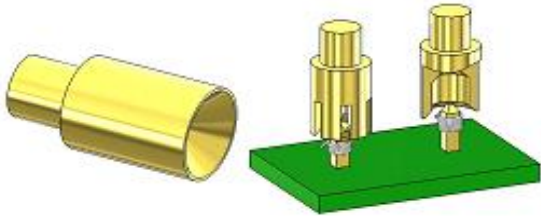


HEAD STYLES AND APPLICATIONS

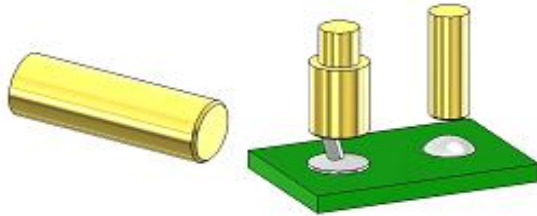
CONCAVE - A

90° concave tip for probing wire-wrap terminals, connector pins, component leads and feed through terminals.



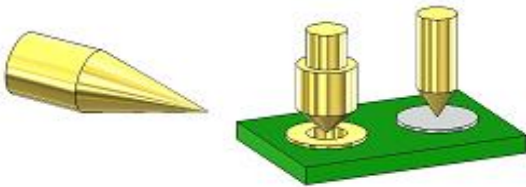
FLAT - F

Used for damage-free probing of rounded surfaces. Also suitable for solder pads and contact pins.



SPEAR - B

For penetration of oxides, fluxes and some conformal coatings. Also used to contact solder pads and holes.



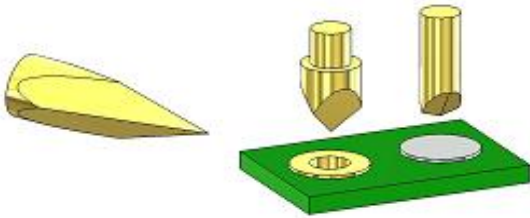
STAR - K

Through-plated holes, lands and pads. Self-cleaning sharp point. The sharp edges penetrate contamination and oxide layers.



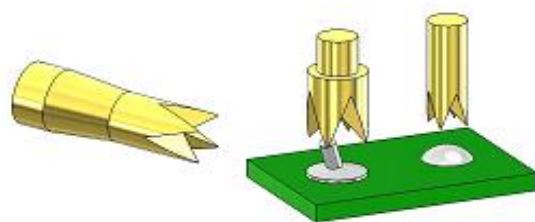
DAGGER - BT80 & CHISEL - H

Used to penetrate holes and solder pads. The sharp edges penetrate flux residues and oxide layers.



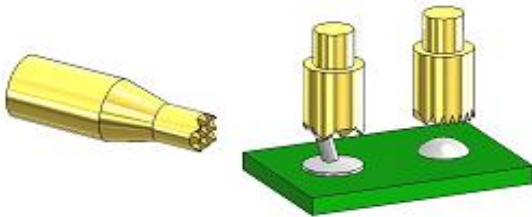
4-POINT CROWN - Q

For pad surfaces and soldered pins. The sharp edges penetrate flux residues and oxide layers.



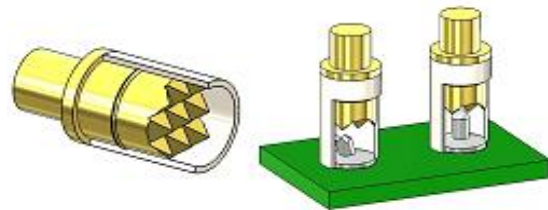
SERRATED - C

Sharp points provide good electrical contact over large target areas e.g. bent component leads, without deflection.



INSULATED SERRATED - C.INS

For detecting the correct length and straightness of pins.



DOME - D

For screws, terminal blocks and edge connector fingers. Does not leave marks or scratches.



STEP PROBES

For position and presence test of connectors.



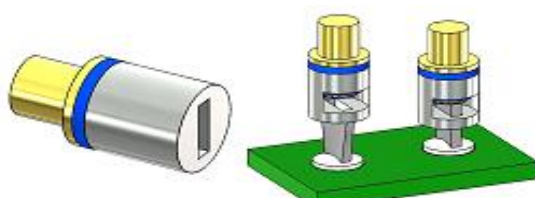
TULIP - M1

Used for severe contacting of plated or filled through holes.



INSULATED METAL CAP - F1-T (slotted)

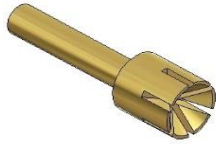
For detecting the correct length and straightness of flat pins.



A Guide to our Head Styles



A
CONCAVE



A6
SLOTTED CONCAVE



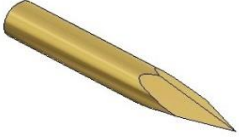
B
SPEAR



BA
FLAT NOSE SPEAR



BR
BULLET NOSE



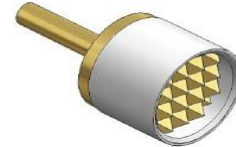
BT80
DAGGER



BST
SHARP POINT



C
SERRATED



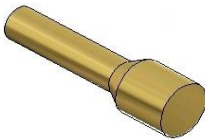
C.INS
INSULATED SERRATED



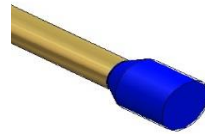
D
DOME



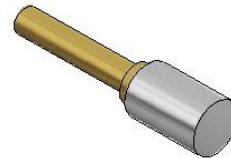
E
CONE



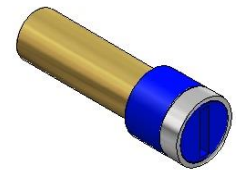
F
FLAT



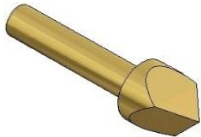
F-POM
FLAT INSULATED



F1-T
INSULATED METAL CAP



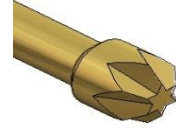
SPOM
INSULATED METAL RING



H
CHISEL



K
STAR



KF
FLAT STAR



L
4 POINT HEADLESS CROWN



L5
3 POINT HEADLESS CROWN



M or M1
TULIP



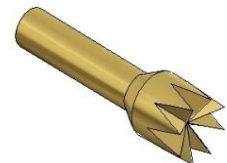
3NST
3 Point Tapered Crown



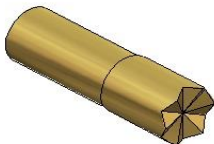
Q
4 Point Crown



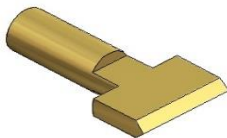
Q5
3 Point Crown



Z
8 Point Crown



W
WAFFLE



Y
BLADE

Notes:

FN headstyle has been replaced by BST

G headstyle has been replaced by the relevant Q or L crown heads

TSU/TSUST/SU headstyles are now obsolete

Peak Test Services

www.peaktest.co.uk

Tel: +44 (0) 191 387 1923

Fax: +44 (0) 191 387 1994